

Nunavut Tunngavik
ᑎᓄᓐᓂᓐ ᑕᓄᓐᓂᓐ
Lands & Resources Department
P.O. Box 72
Cambridge Bay, Nunavut
X0E 0C0
Telephone: (867) 983-2817
Fax: (867) 983-2723
email: ntlands@polarnet.ca
Web Page: www.tunngavik.com

Kitikmeot Inuit Association
ᑕᓄᓐᓂᓐ ᑕᓄᓐᓂᓐ
Kitikmeot Inuit Association
Lands Department
P.O. Box 360
Kugluktuk, Nunavut
X0E 0E0
Telephone: (867) 982-3310
Fax: (867) 982-3311
email: kitilands@polarnet.ca
www.polarnet.ca/polarnet/kit.htm

Kivalliq Inuit Association
ᑕᓄᓐᓂᓐ ᑕᓄᓐᓂᓐ
Kivalliq Inuit Association
P.O. Box 340
Rankin Inlet, Nunavut
X0E 0G0
Telephone: (867) 645-2810
Fax: (867) 645-3855

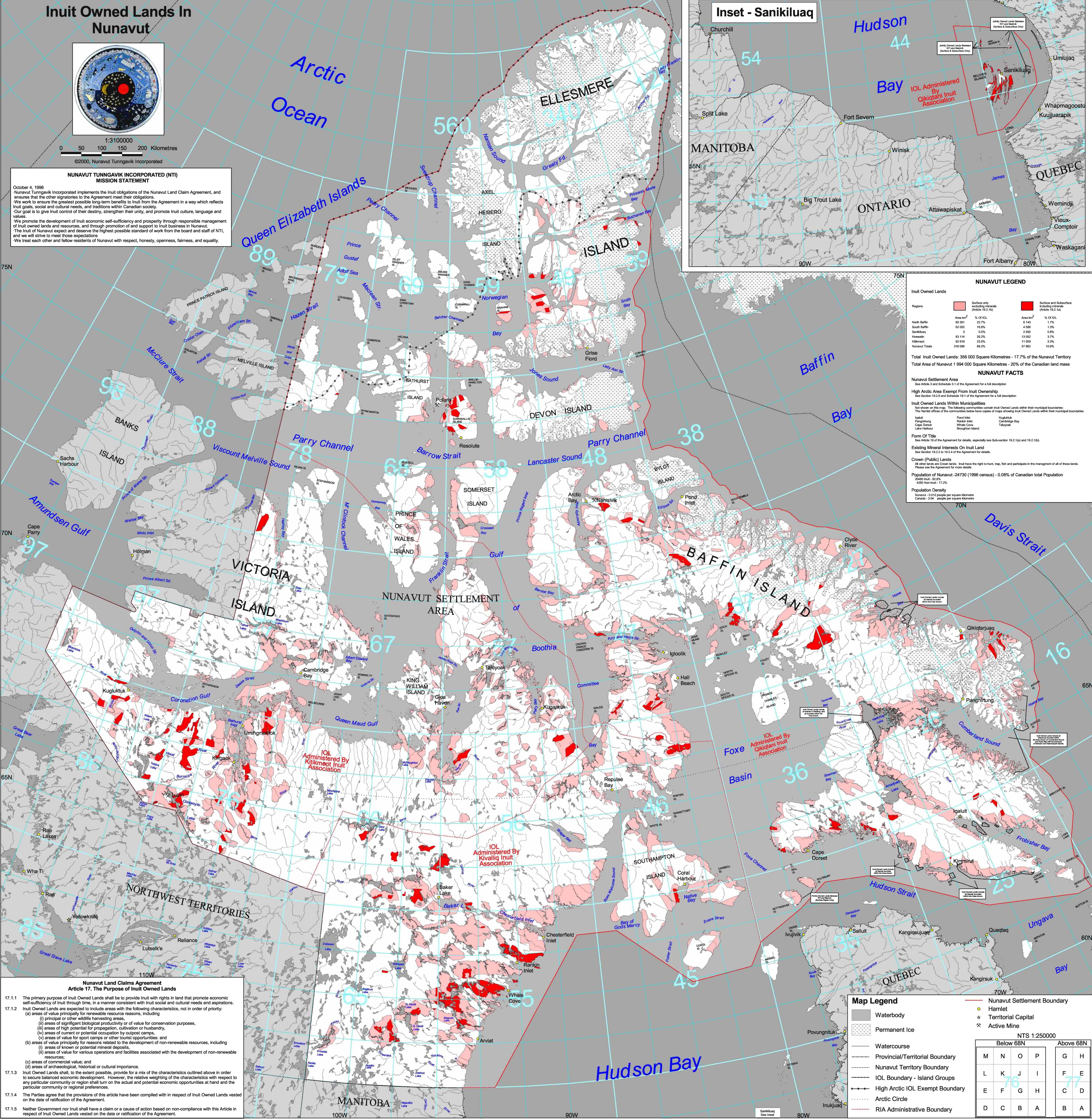
QIKIQTANI INUIT ASSOCIATION
ᑕᓄᓐᓂᓐ ᑕᓄᓐᓂᓐ
Qikiqtani Inuit Association
P.O. Box 219
Igloolik, Nunavut
X0A 0H0
Telephone: (867) 979-5391
Fax: (867) 979-1643
http://www.qikiqtani.nu.ca

QIKIQTAAULUK CORPORATION
ᑕᓄᓐᓂᓐ ᑕᓄᓐᓂᓐ
Qikiqtaaluk Corporation
P.O. Box 1228,
Igloolik, Nunavut
X0A 0H0
Telephone: (867) 979-4047
Fax: (867) 979-1423
email: qc@nunanet.com

Sakku Investments Corporation
ᑕᓄᓐᓂᓐ ᑕᓄᓐᓂᓐ
Sakku Investments Corporation
P.O. Box 188,
Rankin Inlet, Nunavut
X0C 0G0
Telephone: (867) 645-2805
Fax: (867) 645-2063
The business development arm of the Kivalliq Inuit Association

Kitikmeot Corporation
ᑕᓄᓐᓂᓐ ᑕᓄᓐᓂᓐ
Kitikmeot Corporation
P.O. Box 19
Cambridge Bay, Nunavut
X0E 0C0
Telephone: (867) 983-2200
Fax: (867) 983-2995
Website: www.polarnet.ca/polarnet/kitcorp.htm

Nunasi Corporation
ᑕᓄᓐᓂᓐ ᑕᓄᓐᓂᓐ
Nunasi Corporation
Suite 260
5022 49th Street,
Yellowknife, NT X1A 3R7
Telephone: (867) 920-4587
Fax: (867) 920-4592
email: normac@intemorth.com



NUNAVUT TUNNGAVIK INCORPORATED (NTI) MISSION STATEMENT
October 4, 1996
Nunavut Tunngavik Incorporated implements the Inuit obligations of the Nunavut Land Claim Agreement, and ensures that the other signatories to the Agreement meet their obligations.
We work to ensure the greatest possible long-term benefits to Inuit from the Agreement in a way which reflects Inuit goals, social and cultural needs, and traditions within Canadian society.
Our goal is to give Inuit control of their destiny, strengthen their unity, and promote Inuit culture, language and values.
We promote the development of Inuit economic self-sufficiency and prosperity through responsible management of Inuit owned lands and resources, and through promotion of and support to Inuit business in Nunavut.
The Inuit of Nunavut expect and deserve the highest possible standard of work from the board and staff of NTI, and we will strive to meet those expectations.
We treat each other and fellow residents of Nunavut with respect, honesty, openness, fairness, and equality.

NUNAVUT LEGEND

Regions	Area km ²	% of IOL	Area km ²	% of IOL
North Baffin	80,351	22.7%	6,143	1.7%
South Baffin	62,002	18.3%	4,486	1.3%
Sarceluk	0	0.0%	2,992	0.9%
Kenewick	83,114	26.2%	13,002	3.7%
Kilbuck	82,819	23.8%	11,909	3.3%
Nunavut Totals	318,086	89.2%	37,632	10.8%

Total Inuit Owned Lands: 356 000 Square Kilometres - 17.7% of the Nunavut Territory
Total Area of Nunavut 1 994 000 Square Kilometres - 20% of the Canadian land mass

NUNAVUT FACTS
Nunavut Settlement Area
See Article 3 and Schedule 3.1 of the Agreement for a full description
High Arctic Area Exempt From Inuit Ownership
See Section 19.2.6 and Schedule 19.1 of the Agreement for a full description
Inuit Owned Lands Within Municipalities
Not shown on this map. The following communities contain Inuit Owned Lands within their municipal boundaries:
The Inuit offices of the communities below have copies of maps showing Inuit Owned Lands within their municipal boundaries.
Igloolik: Igloolik Inuit Association
Pond Inlet: Pond Inlet Inuit Association
Cape Dorset: Cape Dorset Inuit Association
Laurieville: Laurieville Inuit Association
Form Of Title
See Article 19.2 of the Agreement for details, especially see Sub-section 19.2.1(a) and 19.2.1(b).
Existing Mineral Interests On Inuit Land
See Section 19.2.2 to 19.2.4 of the Agreement for details.
Crown (Public) Lands
All other lands are Crown lands. Inuit have the right to hunt, trap, fish and participate in the management of all of these lands.
Please see the Agreement for more details.
Population of Nunavut: 24730 (1996 census) - 0.08% of Canadian total population
Land Area: 1,994,000 km²
Population Density: 0.012 people per square kilometre
Canada: 3.5 people per square kilometre
4200 Non-Inuit - 17.2%

Nunavut Land Claims Agreement
Article 17. The Purpose of Inuit Owned Lands
17.1.1 The primary purpose of Inuit Owned Lands shall be to provide Inuit with rights in land that promote economic self-sufficiency of Inuit through time, in a manner consistent with Inuit social and cultural needs and aspirations.
17.1.2 Inuit Owned Lands are expected to include areas with the following characteristics, not in order of priority:
(a) areas of value principally for renewable resource reasons, including:
(i) principal or other wildlife harvesting areas;
(ii) areas of significant biological productivity or of value for conservation purposes;
(iii) areas of high potential for propagation, cultivation or husbandry;
(iv) areas of current or potential occupation by outpost camps;
(v) areas of value for sport camps or other tourist opportunities; and
(b) areas of value principally for reasons related to the development of non-renewable resources, including:
(i) areas of known or potential mineral deposits;
(ii) areas of value for various operations and facilities associated with the development of non-renewable resources;
(c) areas of commercial value; and
(d) areas of archaeological, historical or cultural importance.
17.1.3 Inuit Owned Lands shall, to the extent possible, provide for a mix of the characteristics outlined above in order to secure balanced economic development. However, the relative weighting of the characteristics with respect to any particular community or region shall turn on the actual and potential economic opportunities at hand and the particular community or regional preferences.
17.1.4 The Parties agree that the provisions of this article have been complied with in respect of Inuit Owned Lands vested on the date of ratification of the Agreement.
17.1.5 Neither Government nor Inuit shall have a claim or a cause of action based on non-compliance with this Article in respect of Inuit Owned Lands vested on the date of ratification of the Agreement.



Nunavut
On April 1, 1999, the new territory of Nunavut came into being, taking in the central and eastern portions of the Northwest Territories. This fulfils a long time dream for Inuit. Nunavut is ruled by a public government representing all of its residents. With Inuit making up 85 percent of the population, they assume their rightful place in Canada's federation and take charge of their own destiny. The people of Nunavut held the territory's first election on February 15, 1999. Their government assumed political responsibility for the further development of Nunavut April 1, 1999. The Government of Nunavut is democratic, public and responsible, with law-making powers similar to those of the Yukon and Northwest Territories governments. Nunavut is the result of the largest land claim ever settled in Canada. The territory makes up one fifth of Canada's land mass, approximately 2 million square kilometres. Nunavut means our land in Inuktitut, the Inuit language.

Nunavut Planning Commission
P.O. Box 12, Taloyoak,
Nunavut, X0E 1B0
Telephone: (867) 561-8996
Fax: (867) 561-8897
www.npc.nunavut.ca

NUNAVUT SURFACE RIGHTS TRIBUNAL
Nunavut Surface Rights Tribunal
P.O. Box 1019 Parnavik Building
Igloolik, Nunavut
X0A 0H0
Telephone: (867) 979-1555
Fax: (867) 979-1528

Nunavut Wildlife Management Board
ᑕᓄᓐᓂᓐ ᑕᓄᓐᓂᓐ
Nunavut Wildlife Management Board
P.O. Box 1379,
Igloolik, Nunavut
X0A 0H0
Telephone: (867) 979-6962
Fax: (867) 979-7785

Nunavut Water Board
ᑕᓄᓐᓂᓐ ᑕᓄᓐᓂᓐ
Nunavut Water Board
P.O. Box 119,
Gjoa Haven, Nunavut
X0E 1J0
Telephone: (867) 360-6338
Fax: (867) 360-6369

Nunavut Impact Review Board
P.O. Box 1340,
Igloolik, Nunavut
X0E 0C0
Telephone: (867) 983-2593
Fax: (867) 983-2594 or (867) 983-2574

Sustainable Development
Government of Nunavut
Department of Sustainable Development
P.O. Box 1340,
Igloolik, Nunavut
X0A 0H0
Telephone: (867) 979-8071
Fax: (867) 979-5920

Indian and Northern Affairs Canada
Affaires indiennes et du Nord Canada
Manager, Land Administration Division, D.I.A.N.D.
Box 1500, Yellowknife, NT, X1A 2P3
(867) 669-2071 phone
(867) 669-2713 fax
Director, Mineral Resources Directorate, D.I.A.N.D.
Box 1500, Yellowknife, NT, X1A 2P3
(867) 669-2571 phone
(867) 669-2725 fax
http://www.inac.gc.ca

